



Shenzhen Coreray Technology Co.,Ltd

Videolaringoscopios y Manejo de la Vía Aérea

Falkein

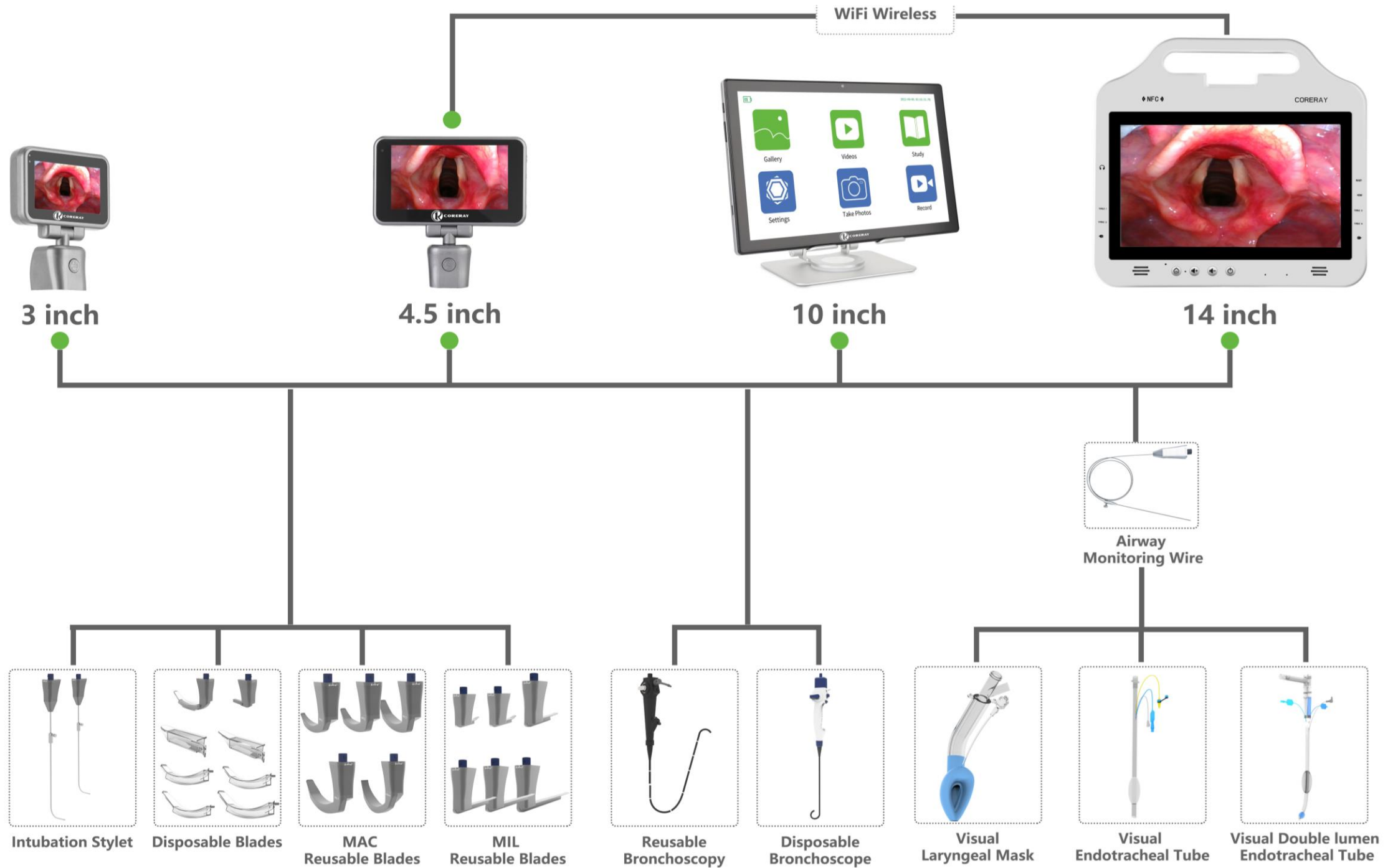
línea
médica



www.falkein.com | info@falkein.com

09 9977 4940





CR-31 Parameters



Parts	Description	Technical Index	
		3 Inch Host	4.5 Inch Host
Machine	Display	3" screen	4.5" Touchable screen
	Resolution Ratio	640*360	854*480
	Viewing Angle	≥60°	≥60°
	Power	<2W	<2W
	Display rotation angle (Vertical, horizontal)	0°~150°, 0°~270°	0°~150°, 0°~270°
	Weight	156g	232g
Camera	Illuminance	≥1000 LUX	≥1000 LUX
	Resolution Ratio	1280*720 px	1280*720 px
Image / Video Function	Image / Video function	Yes	Yes
	Output: Easy to storage and establish image/video/Review	USB output	Type C output
	Memory type	Micro SD card 16GB, automatic coverage of full record	
Battery	Battery type	Rechargeable lithium battery	
	Capacity	2500mAh	3500mAh
	Cycle life of battery	>1000 times	>1000 times
	Battery working time	>3.5 hrs	>5 hrs
	Charging Time	<3.5 hrs	<4 hrs
	Charging Port	Micro USB	Type C

4.5 inch Touch Screen

Coreray full digital high-definition image technology touch screen

Photo and video easy to review

Built-in teaching videos, User instruction, easy to learn operation



Touch Screen

Touch Screen

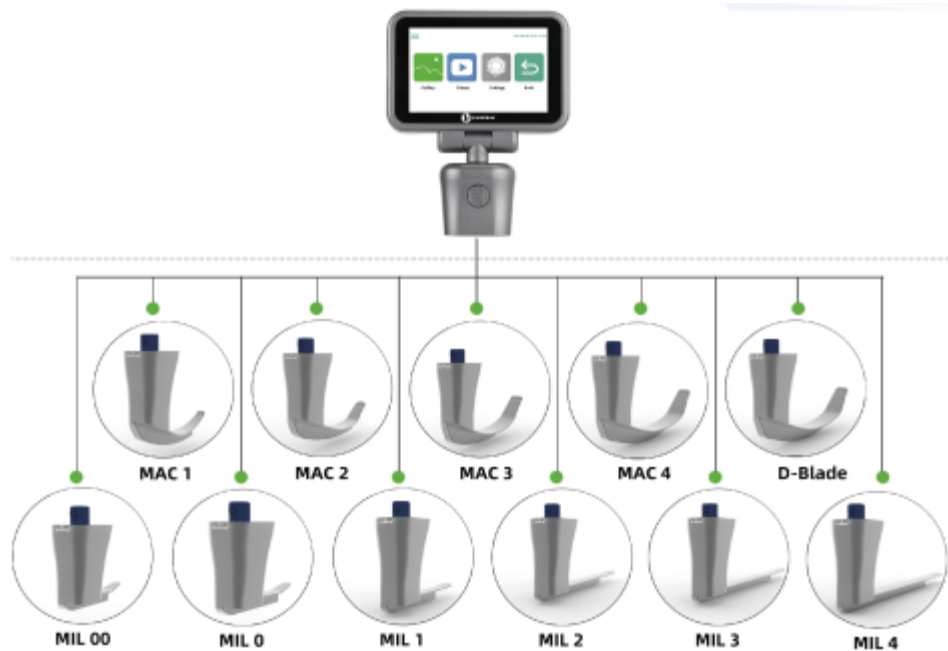
Clear operation interface and buttons

Touch control and key control, suitable for a variety of usage scenario

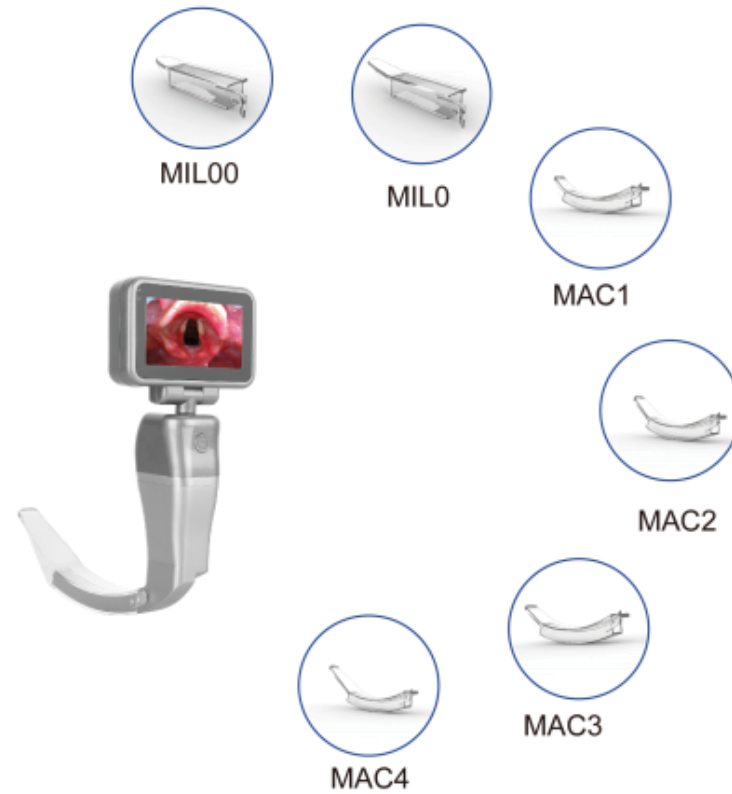
multi-language switching, suitable for all countries

Video Laryngoscope

CR-31



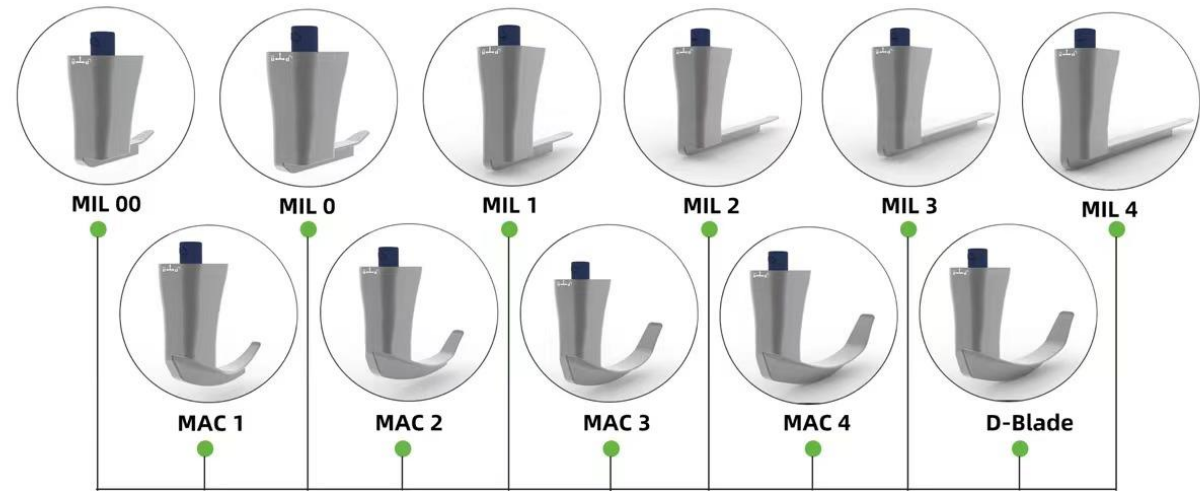
CR-31D



CR-VLS



Reusable Video Laryngoscope CR-31



- Medical grade magnesium alloy handle with strong bending resistance
- More than 1000 times

CR-31 Reusable Advantages

Screen suitable for different types of video laryngoscope, affordable, clear display

Humanized one-button photo and video function

Smooth surface, easy to clean and disinfect

Blade guide groove design makes intubation simple and effective



Universal USB charging, convenient and quick

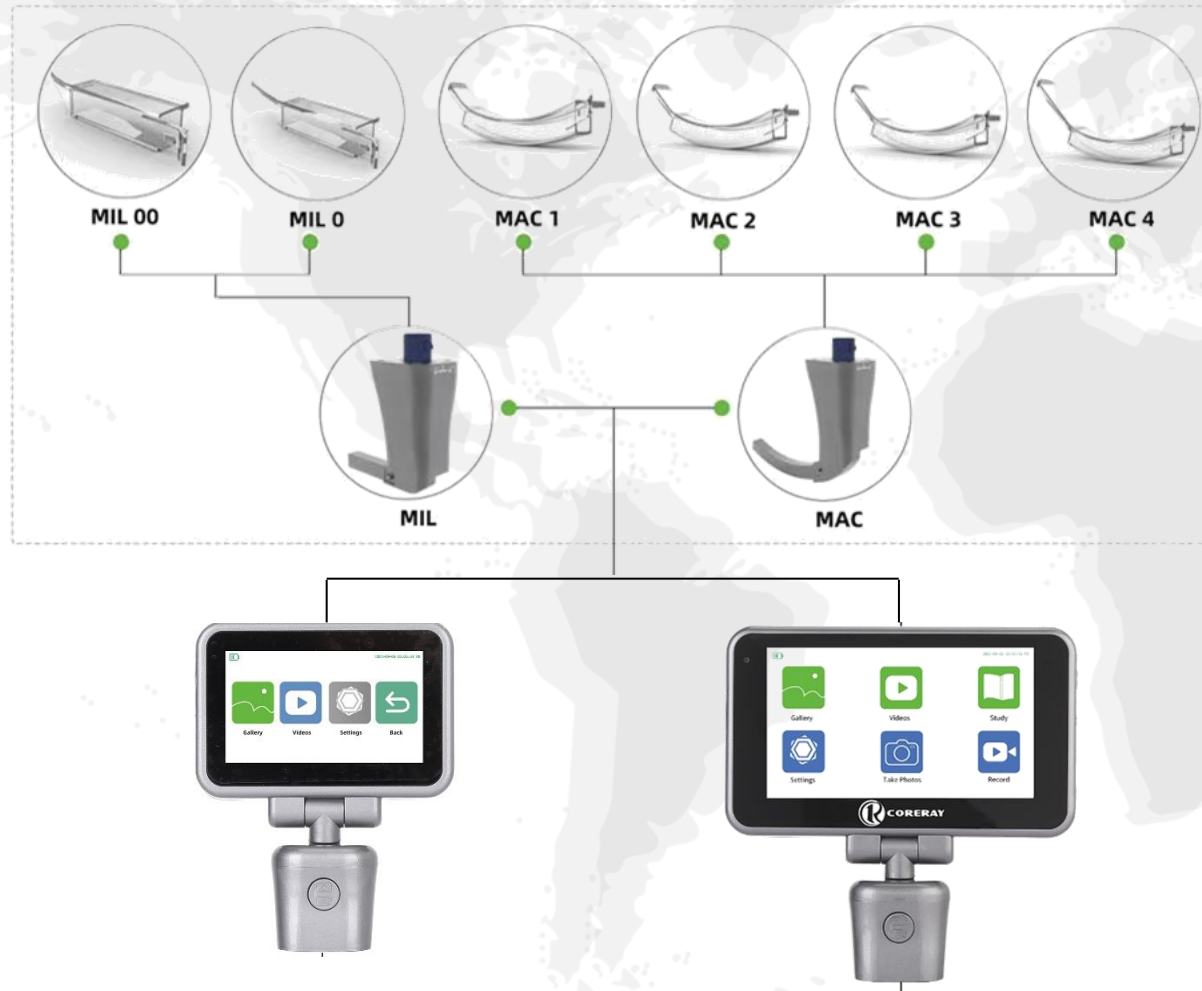
Full range of large perspective display, suitable for clinical teaching

Intelligent automatic shutdown, reduce power loss

New magnesium alloy handle, can be reused more than 1000 times

6 LED ring lights for clearer vision, High definition camera, advanced unique anti-fog technology

Disposable Video Laryngoscope CR-31D



Germany imported PC material
Sterilized by EO in the factory

Video Lighted Intubation Stylet CR-VLS



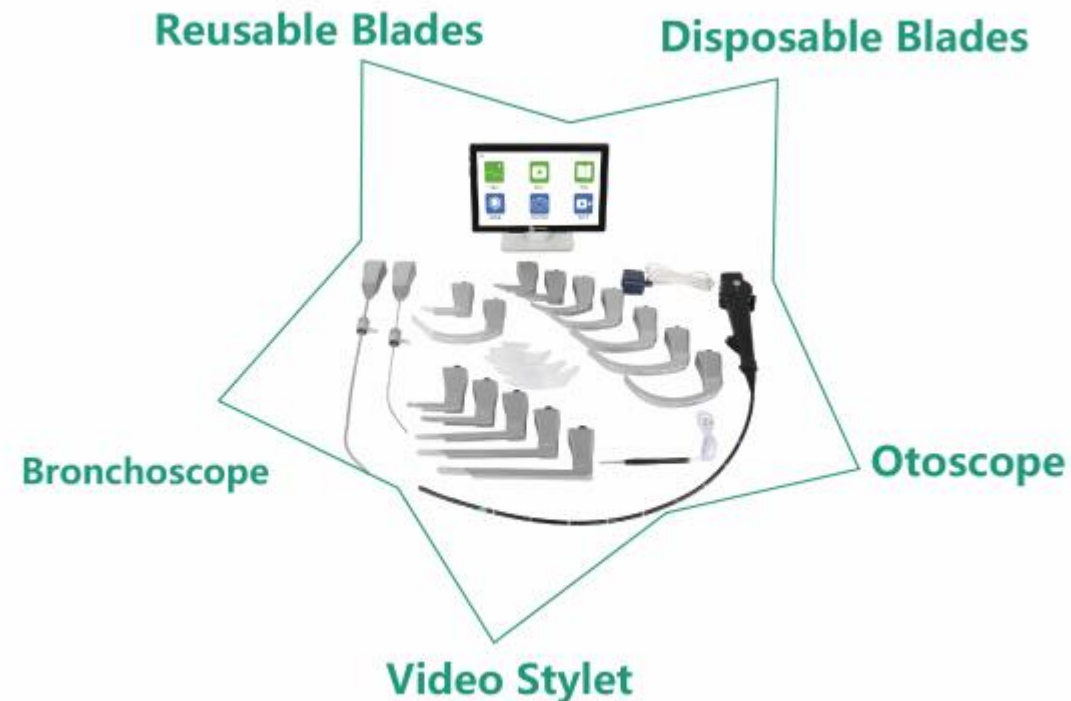
CR-VLS-P: Pediatric&Neo

CR-VLS-A: Adult

- Nickel-titanium new material
- Bending Angle can be adjusted at will, the shape can be restored in high temperature
- which is suitable for **difficult airway** and for **patients with a limited mouth opening**, reducing the damage to the patient's mouth, throat and teeth.

CR-31T Tablet

Parts	Description	Technical Index
SCREEN	Display	10.1 INCH Touchable screen
	Resolution Ratio	1280*800
	Power	<2W
	Weight	0.8kg
	Illuminance	≥ 1000lx , h=30mm
CAMERA	Display rotation angle (Vertical, horizontal)	≥ 60°
	Resolution Ratio	≥ 5000K
Image / Video Function	Image / Video function	1280*720 px
	Easy to storage and establish image/video/Review	Yes
	Memory type	32G
Battery	Battery type	Rechargeable lithium battery
	Capacity	3800mAh
	Cycle life of battery	>1000 times
	Battery working time	>5hrs
	Charging Time	<4hrs
Adaptor	Charging Port	Type C
	Input	100-240V, 50/60Hz.
	Output	5V2A



- Designed for market conditions
- Affordable and competitive

CR-32 I-Airway workstation



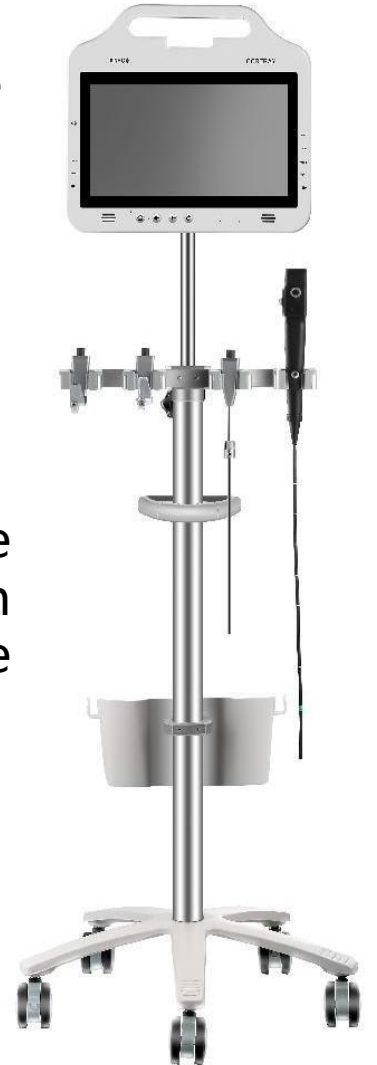
CR-32 Wireless workstation



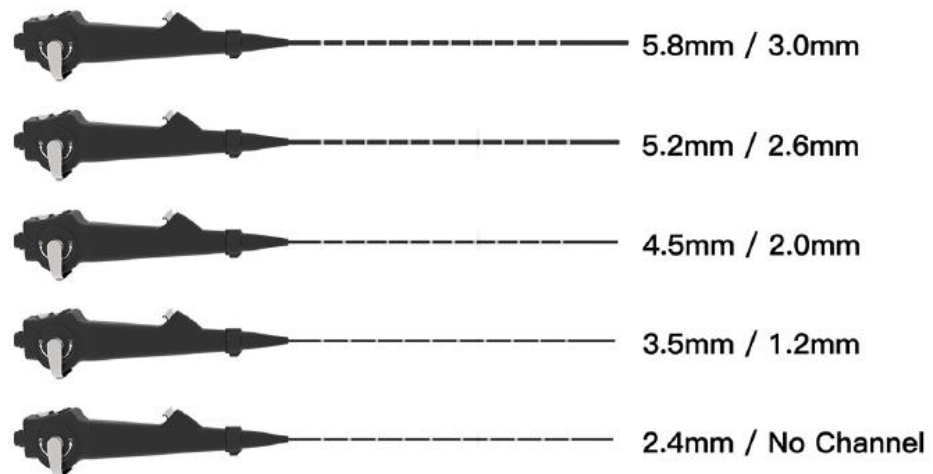
1. Consistent user interface and easy to operate
2. **Strong scalability:** video laryngoscope device can be used alone, or connect to our I-airway working station **wireless or wired.**

3. **Multi-screen collaboration and dual storage:** Real-time image display on multiple screens, both devices can take pictures and video, and can store them, which can enhance data security and is convenient for demonstration, teaching, tele-medicine and other functions.

4. **Easy to make and manage medical reports.** It can make graphic or video medical report, bring much more convenience for physicians in clinical use.



Handheld Bronchoscope CR-33



Bronchoscope CR-33/33D

CR-33 Flexible Video Laryngoscope



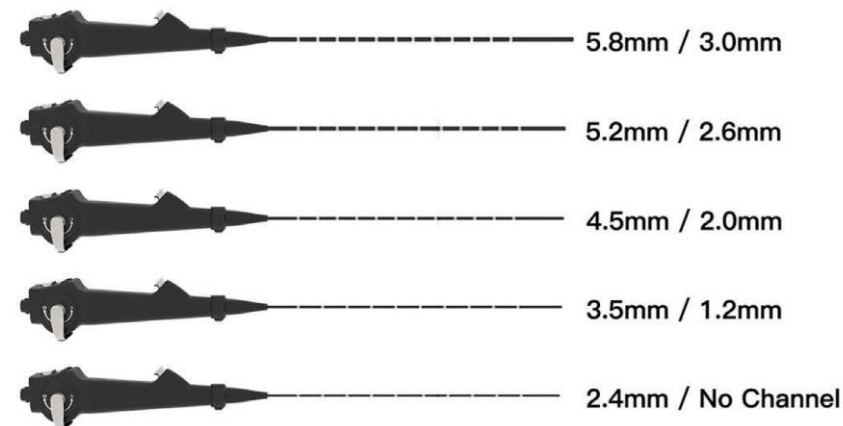
CR-33D Disposable Flexible Video Laryngoscope

5 Models with Full Size Coverage



Reusable Bronchoscope CR-33

- Handle part medical polymer material, lighter weight (250g)
- The bending Angle of the front end of the soft mirror is large, which can fully meet the clinical needs
- The whole machine is waterproof and can be soaked and disinfected
- Working length 600mm
- Three levels brightness adjustment



Model	Size(m m)	Working Channel(mm)	Front bending Angle °
CR-BRT58	5.8	3.0	Up and down 160°/130° Left and right 90°/90°
CR-BRT52	5.2	2.6	
CR-BRT45	4.5	2.0	
CR-BRT35	3.5	1.2	Up and down 180°/150° Left and right 90°/90°
CR-BRT24	2.4	-	Up and down 150°/150° Left and right 90°/90°

Disposable Bronchoscope CR-33D

- Eliminate disinfection dead spots to avoid the risk of cross-infection between patients.
- Adapt to the fast pace of emergency work.
- Reduce postoperative disinfection.



Model	Size(mm)	Working Channel(mm)	Front bending Angle °
CR-BRDT58	5.8	3.0	Up and down 180°/1850° Left and right 90°/90°
CR-BRDT52	5.2	2.6	
CR-BRDT40	4.0	2.0	
CR-BRDT32	3.2	1.2	
CR-BRDT20	2.0	-	

Features

Quick Handlings

- lock design
- Fast installation & disassembling

1

Angulation Control

- Flexible angulation control
- Precise location

2

Rotary Adjustment

- Rotation can be adjusted by 90 ° left and right

3

4

Adjust Brightness

- 4 gears for adjustment

5

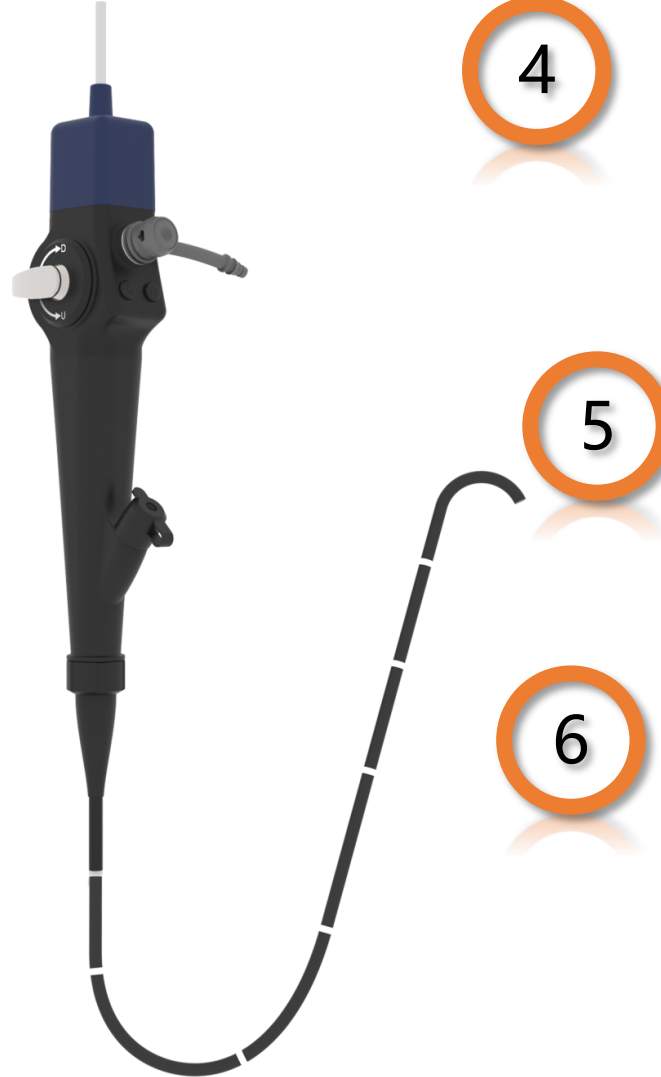
Front Tip

- Object lens, LED light source, Biopsy channel outlet

6

Distal Tip Part

- Dual deflections
- New **CMOS** Technology



Clinical Application- Intubation

For predictably difficult airways

CSA guidelines recommend the use of a soft video lens for endotracheal intubation under awake sedation and surface anesthesia.

- Expect more difficult tracheal intubation
- Severe micrognathia
- Severe mouth restriction etc



Clinical Application

- Alveolar lavage
- Sputum suction and other secretions cleaning
- administration
- Gas cut position check
- Tracheal intubation
- Tracheal intubation position confirmed
- Foreign body forceps
- Biopsy forceps biopsy
- Transbronchial frozen biopsy (larger specimen than biopsy forceps biopsy)
- Transbronchial needle aspiration biopsy TBNA (mass or cyst abscess, etc.)
- Local laser treatment (to burn the tumor and break it down to remove the narrowing or blockage caused by the tumor)
- Brachytherapy (palliative care for bronchial lumen malignancies)

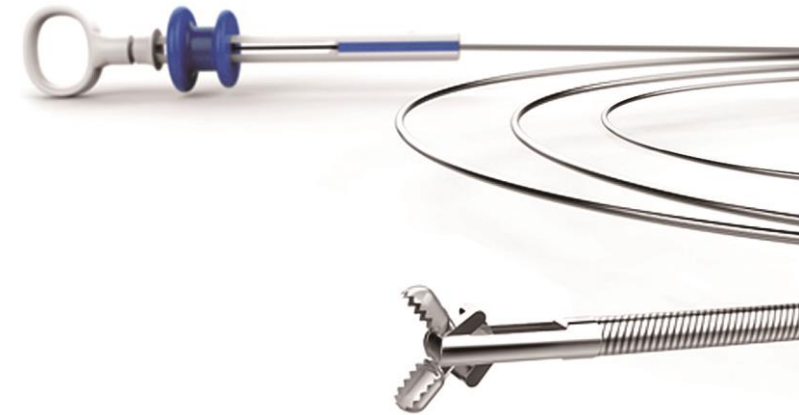
Examination



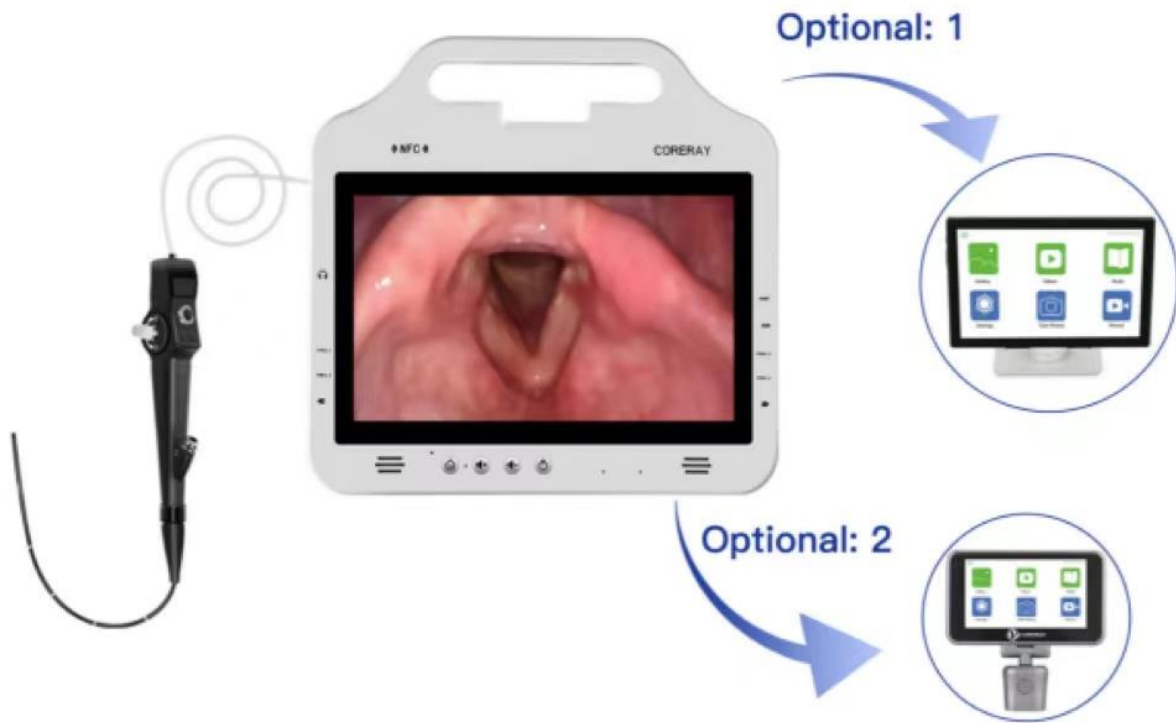
Diagnostic



Treatment



Rhinolaryngoscope CR-33R



Serving multiple functions in otolaryngology (ENT) or ear, nose and throat medicine. Its use spans from routine examinations to complex surgical procedures, making it an essential part of ENT.

[illegible]

Disposable Rhinolaryngoscope CR-33R



Coreray disposable rhinolaryngoscope is a sterile single-use rhinolaryngoscope that eliminates patient cross-contamination. disposable rhinolaryngoscope eliminates the need for complex reprocessing and ongoing repair.

It helps to perform procedures confidently,
document them easily and streamline
workflow.

Model	Insertion Tube	Channel	Working Length	Field of View	Depth of Field	Bending (Up/Down)
CR-RLDT50	ø5.0mm	ø2.8mm	300mm	120°	3-50mm	180°/ 180°
CR-RLDT40	ø4.0mm	ø2.0mm	300mm	120°	3-50mm	180°/ 180°
CR-RLDT32	ø3.2mm	ø1.2mm	300mm	120°	3-50mm	180°/ 180°
CR-RLDT20	ø2.0mm	0	300mm	120°	3-50mm	180°/ 180°

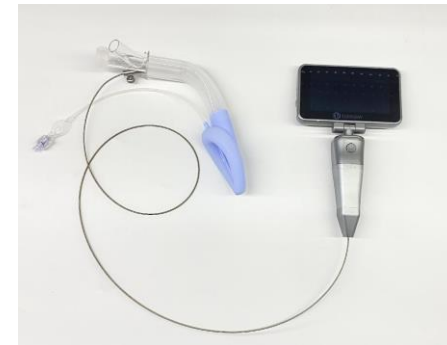
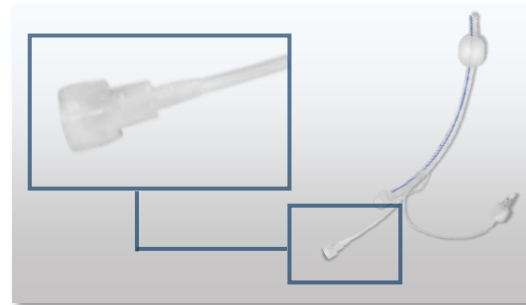
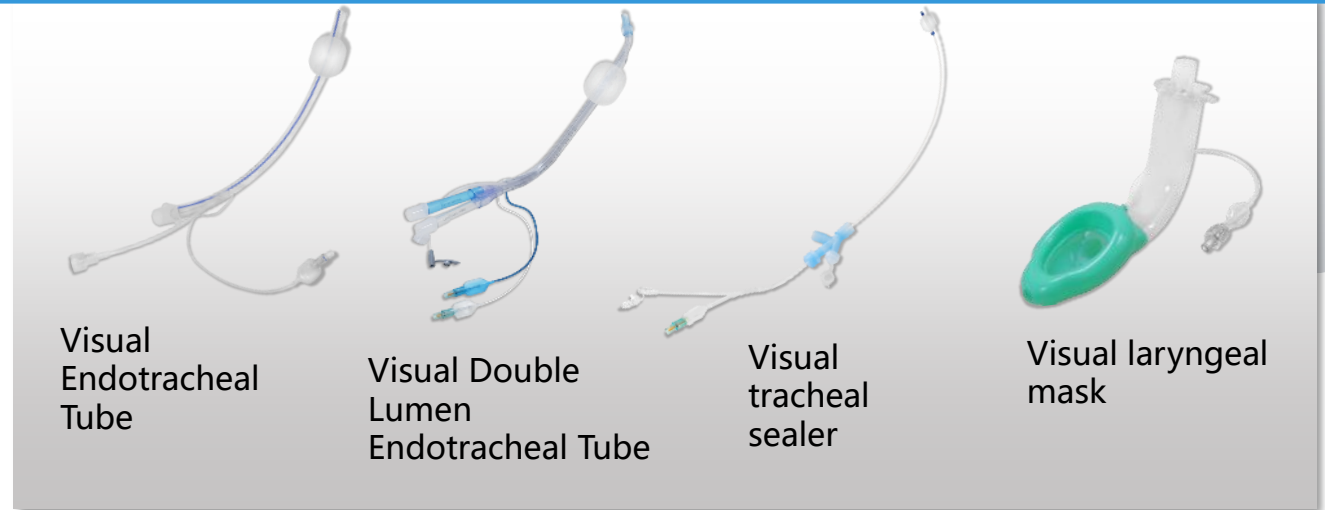
Insertion Tube Material: PEBAX braided tube; **Shell:** ABS; **Resolution:** 160000;
Illumination: ≥ 1000LX; **Color Temperature:** ≥ 5000k

Airway Monitoring Wire CR-AMW01



Visual consumables

- Achieve long - time monitoring in the airway
- Innovative design, high cost performance



Clinical Application

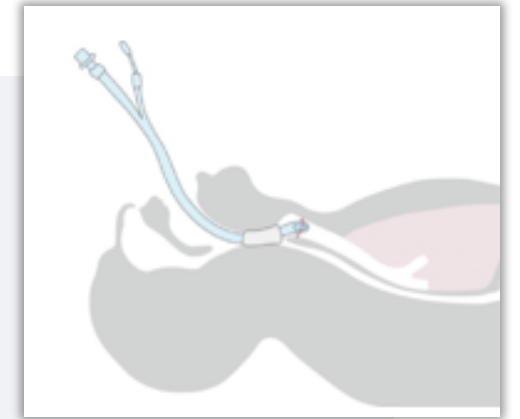
- The whole process of intubation-extubation can be visualized
- Precise insertion and positioning reduces airway damage to patients
- Reduce intubation and positioning time
- Timely detection and treatment of catheter displacement to eliminate the cause of hypoxia
- Reduce the use of bronchoscopy and reduce the cost



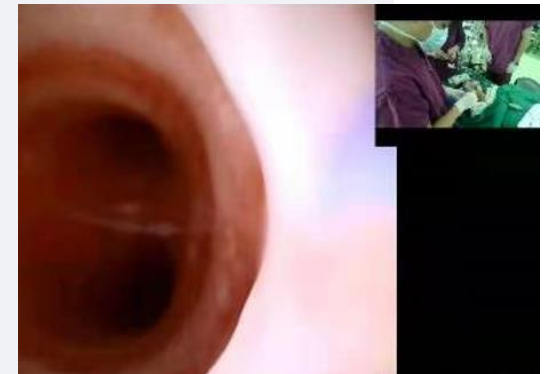
Detection and treatment of chylous exudation



Precision rinse



Detection and treatment of catheter displacement



Precise placement of double-lumen tubes

Advantages of Total Solution

Outstanding

01

Unique performance in the whole industry, wired connection as well as wireless way to make the operation more effective and convenient

Comprehensive

02

Covering everything from airway assessment, establishment, treatment and real-time monitoring of respiratory oxygen therapy with comprehensive instrumentation support.

Systematic

03

Focusing on the systematic nature of airway management, with each link interconnecting and working together to form a complete management system.

Safe

04

Through comprehensive airway assessment and regular dynamic monitoring, the holistic program is able to detect and treat abnormalities in airway management in a timely manner, thus ensuring patient safety.

Personalized

05

Being personalized to meet the airway management needs of different patients. This flexibility makes the airway management closer to the actual condition of the patient, and improves the pertinence and effectiveness of the management.